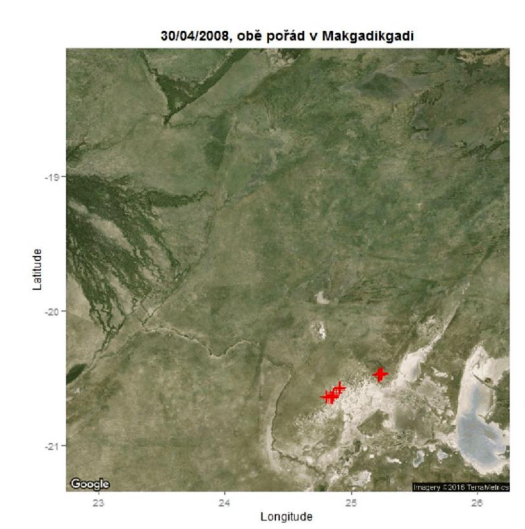
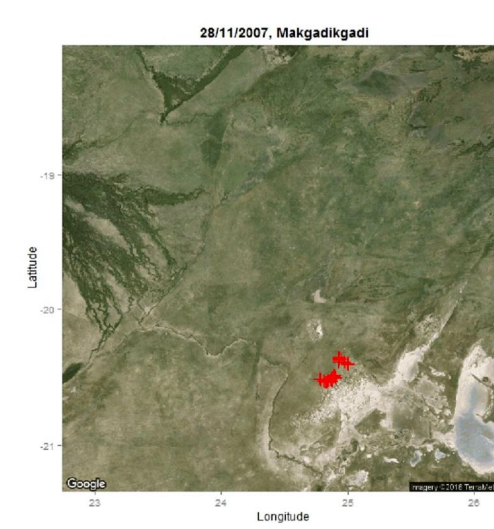
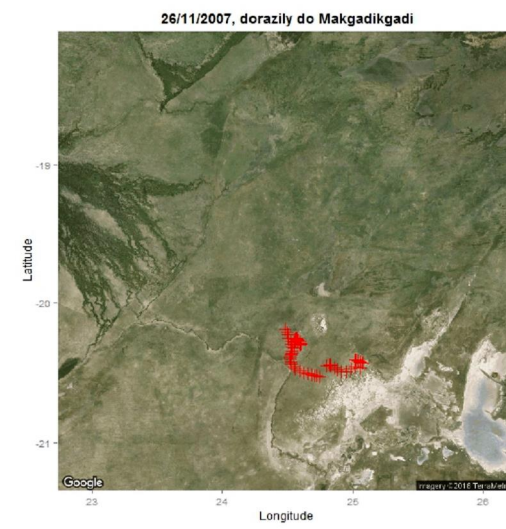
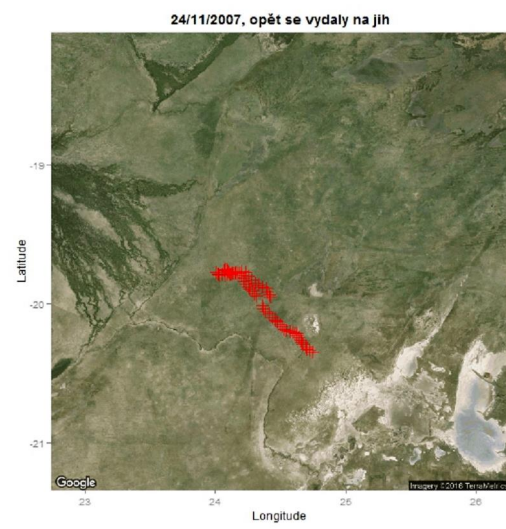
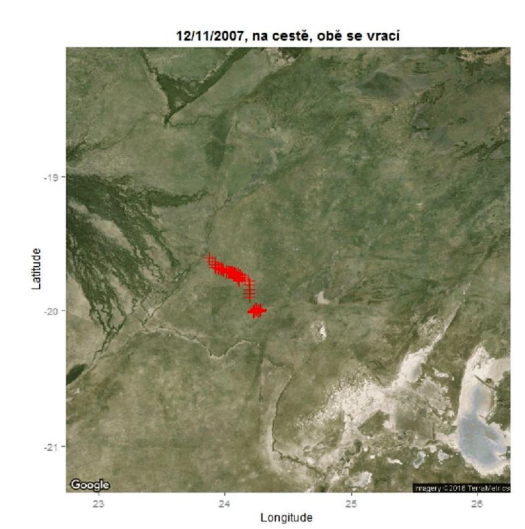
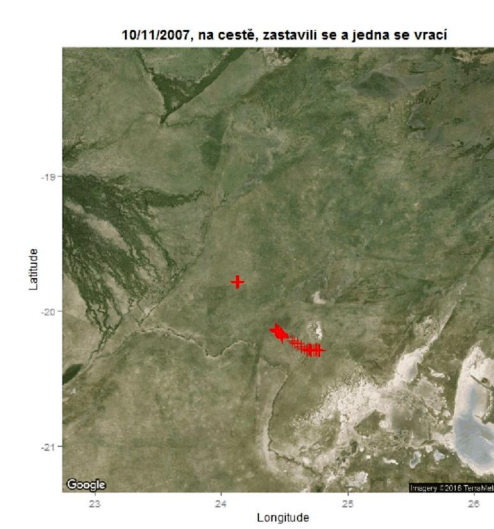
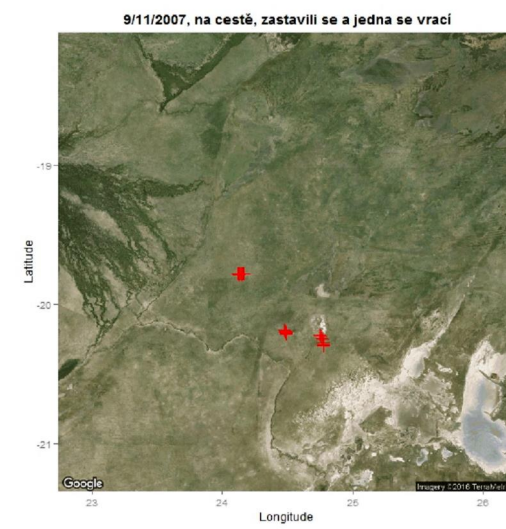
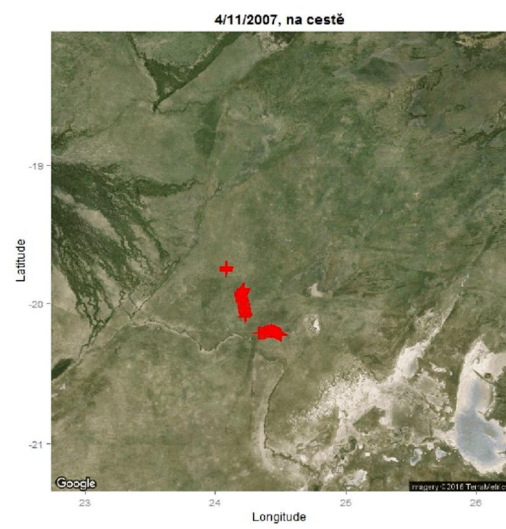
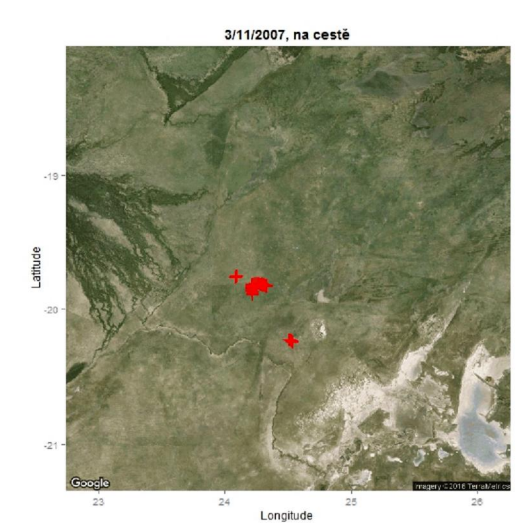
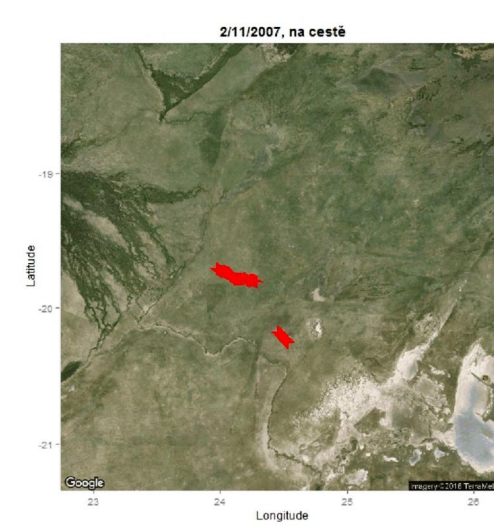
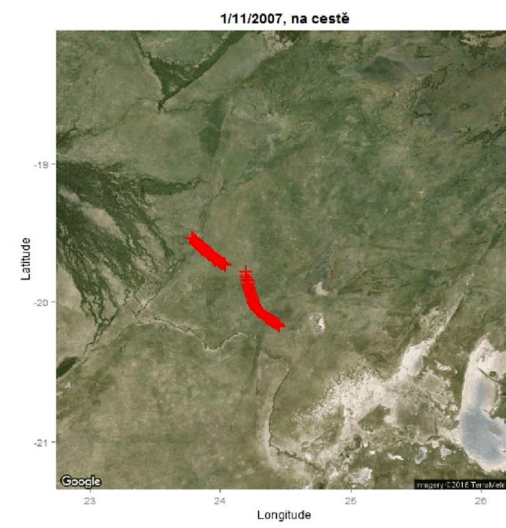
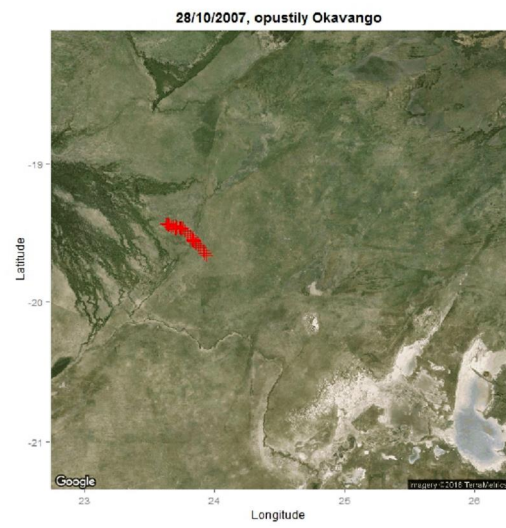
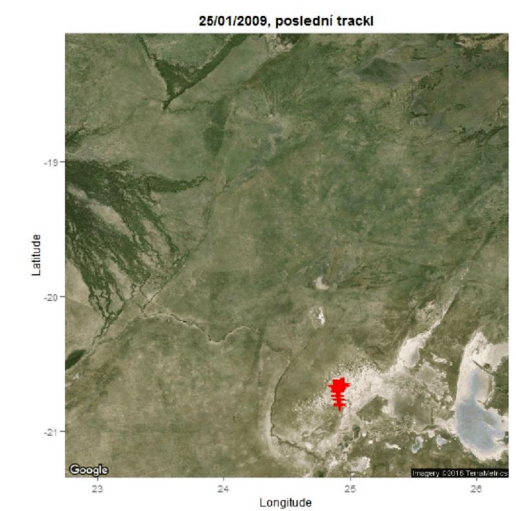
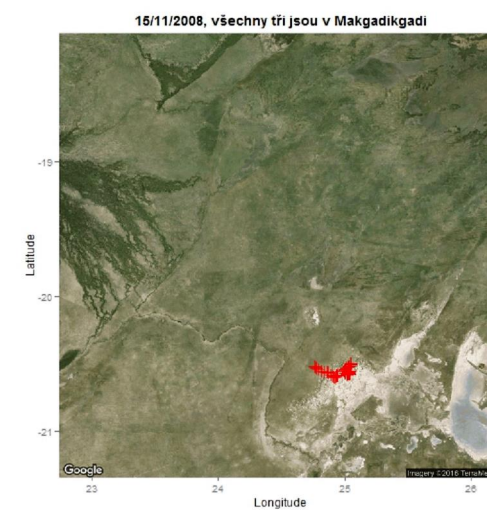
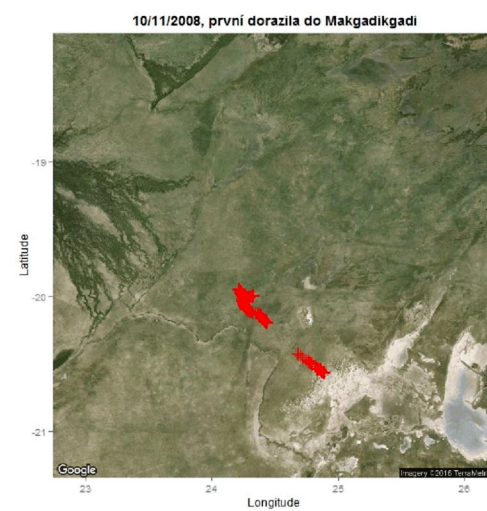
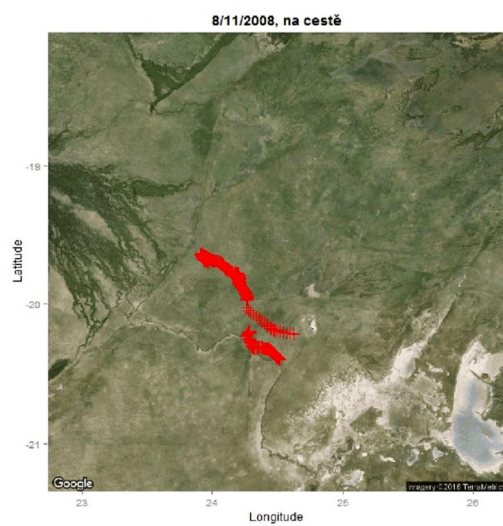
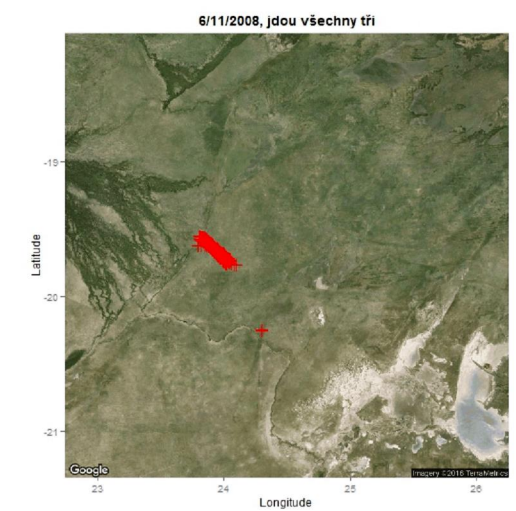
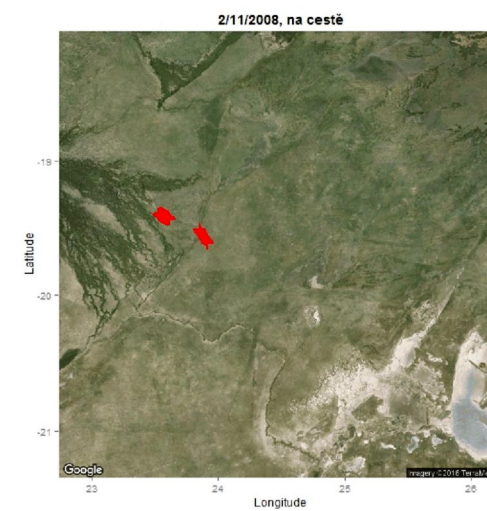
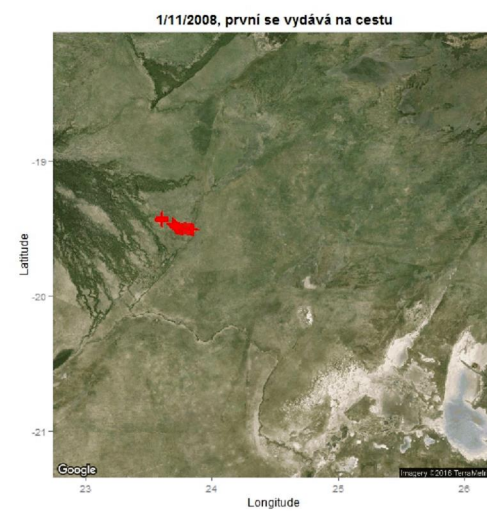
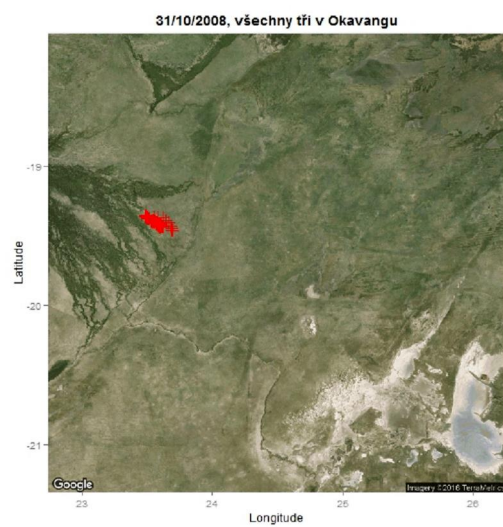
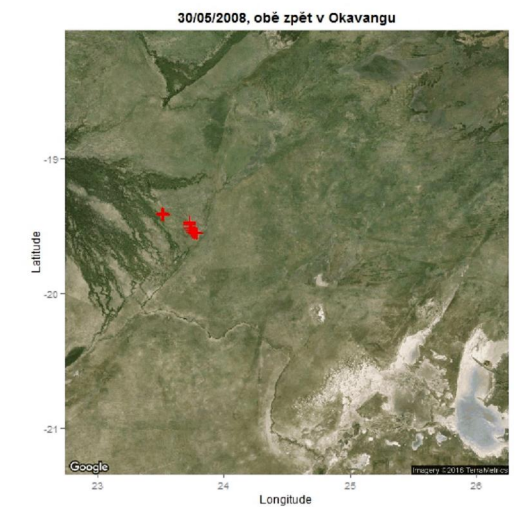
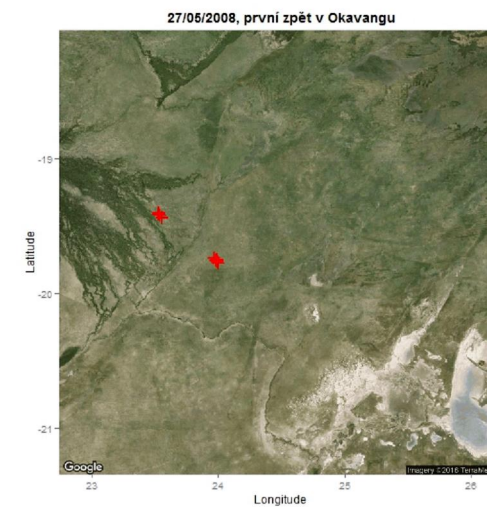
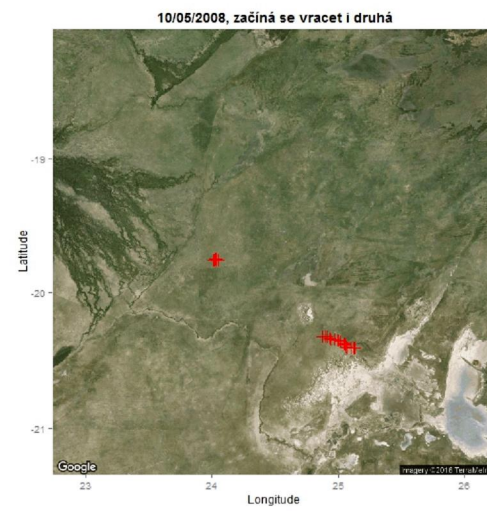
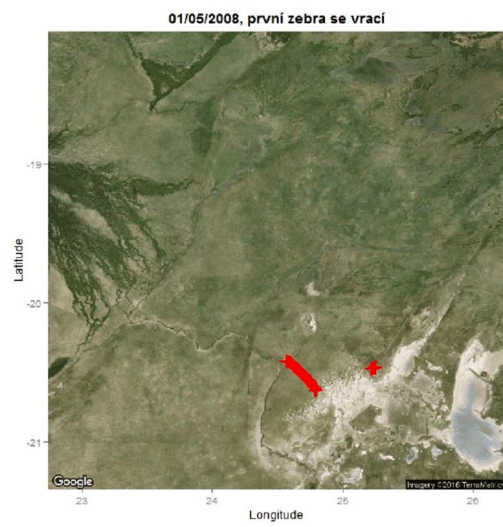


Doba, kterou zebry tráví v Okavangu, v Makgadikgadi a na cestě mezi





(1) zebry jsou v Okavangu

(2) na cestě Okavango ó Makgadikgadi 28/10/2007 (cestou se ale zastavily a na chvíli dokonce vrátily) ó 27/11/2007

(3) zebry jsou v Makgadikgadi 28/11/2007 ó 30/4/2008;

(4) na cestě Makgadikgadi ó Okavango

30/5/2008 ó 31/10/2008

1/11/2008 ó 14/11/2008

15/11/2008 ó konec trekování, což bylo 25/1/2009 (velmi pravděpodobně tam zůstaly déle)

1/5/2008 ó 29/5/2008

í tj., je třeba porovnat stav biotopů :

- Okavango vs. Makgadikgadi 1/6/2008 ó 25/10/2008 (zebrý jsou tou dobou v Okavangu)
- Okavango vs. Makgadikgadi 28/11/2007 ó 25/4/2008 a 15/11/2008 - 25/1/2009 (zebrý jsou tou dobou v Makgadikgadi)
- co vyvolalo pohyb z Okavanga do Makgadikgadi? (co se změnilo v Makgadikgadi?) 1/11/2008 ó 14/11/2008
- co vyvolalo pohyb z Makgadikgadi do Okavanga? (co se změnilo v Okavangu?) 1/5/2008 ó 29/5/2008